



Questa valvola consente il passaggio dell'aria solamente in un senso bloccandola nel senso opposto.
Sono disponibili con filetto maschio, femmina maschio/tubo o tubo/tubo in diverse dimensioni.

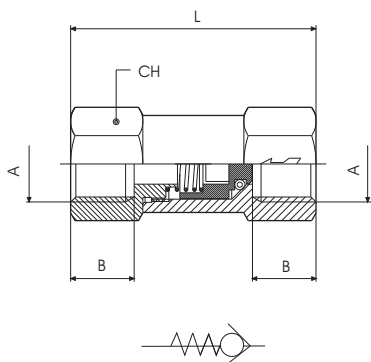
This valve allows the transit of the air only in one way, the valve stops it in the opposite way.
They are available with male or female thread, in several dimensions.

DATI TECNICI / TECHNICAL DATA

Fluido / Fluid	aria con o senza lubrificazione / lubricated or non lubricated air
Pressione di esercizio / Pressure range	2 - 8 bar
Temperatura di esercizio / Temperature range	-20 c° - +80c°

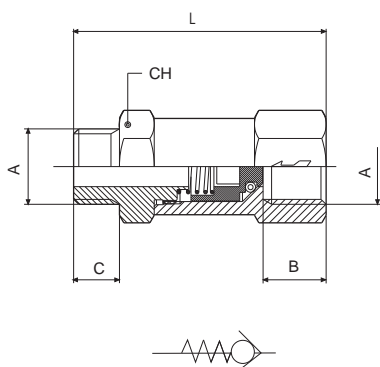
COMPONENTI / COMPONENTS

Corpo / Body	Ottone OT58 nichelato / nickel-plated brass
Molla / Spring	Acciaio inox / stainless steel
Otturatore / Shutter	Ottone OT58 nichelato / nickel-plated brass
Guarnizione / Seal	NBR



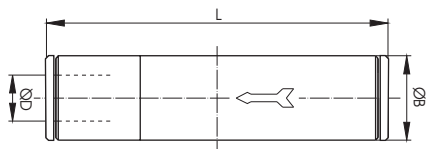
VALVOLA DI NON RITORNO FEMMINA/FEMMINA
NON-RETURN VALVE FEMALE/FEMALE

CODE	A	B	L	CH
VR40011	M5	5,5	26,5	8
VR40012	1/8	8,5	35,5	13
VR40013	1/4	11	43	17
VR40014	3/8	12	58	24
VR40015	1/2	15	63	24



VALVOLA DI NON RITORNO MASCHIO/FEMMINA
NON-RETURN VALVE MALE/FEMALE

CODE	A	B	C	L	CH
VR40021	M5	5,5	4	34,5	8
VR40022	1/8	8,5	6	37,5	14
VR40023	1/4	11	8	46,6	17
VR40024	3/8	12	9	61	24
VR40025	1/2	15	10	64	24

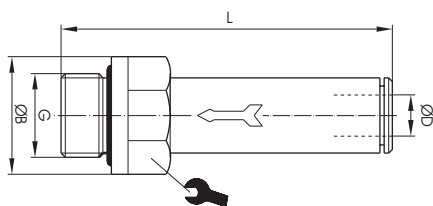



VALVOLA DI NON RITORNO TUBO / TUBO
TUBE / TUBE NON-RETURN VALVE

CODE	ØD	ØB	L
VR400504	4	9	44,5
VR400506	6	11	50
VR400508	8	13	53,5



VALVOLA DI NON RITORNO FILETTO MASCHIO / TUBO
MALE THREAD / TUBE NON-RETURN VALVE



CODE	ØD	G	ØB	L	
VR4003104	4	M5	8	37	9
VR4003204	4	1/8	13	30	11
VR4003206	6	1/8	13	37,5	13
VR4003306	6	1/4	16	38	14
VR4003208	8	1/8	13	38	15
VR4003308	8	1/4	16	39	16
VR4003310	10	1/4	16	42,5	18
VR4003410	10	3/8	20	42,5	18
VR4003512	12	1/2	25	45	22
VR4003514	14	1/2	25	52,5	25

